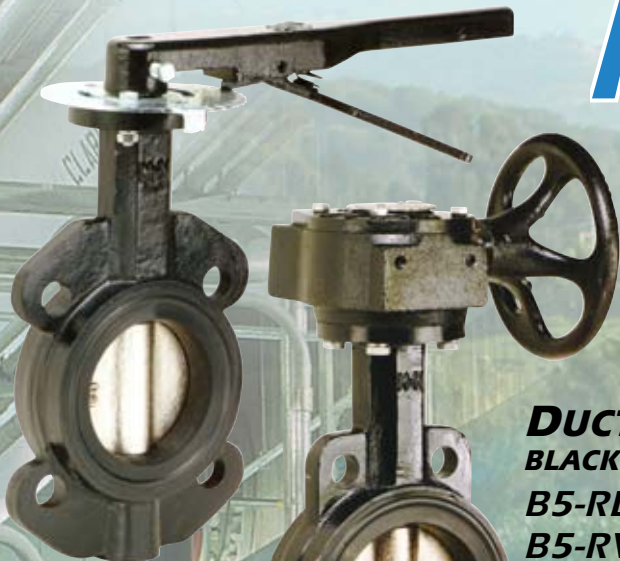




B5 Butterfly Valve



Available In Wafer Style



B5-RLO

B5-RWG

DUCTILE IRON DISC
BLACK BODY - BUNA-N SEAT
B5-RLO - Lever Handle
B5-RWG - Gear Handle

B5-RLO
with 48"
extension
option

ALUMINUM BRONZE DISC
ORANGE BODY - BUNA-N SEAT
B5-RLOAB - Lever Handle
B5-RWGAB - Gear Handle



B5-RLOAB

B5-RWGAB



B5-RLOSE

STAINLESS STEEL DISC
GRAY BODY - EPDM SEAT
B5-RLOSE - Lever Handle
B5-RWGSE - Gear Handle



And Lug Style

ALUMINUM BRONZE DISC
ORANGE BODY - BUNA-N SEAT
B5-LGLAB - Lever Handle
B5-LGGAB - Gear Handle



B5-LGLAB

STAINLESS STEEL DISC
GRAY BODY - EPDM SEAT
B5-LGLSE - Lever Handle
B5-LGGSE - Gear Handle



B5-LGLSE



B5-LGLS



B5-LGGS

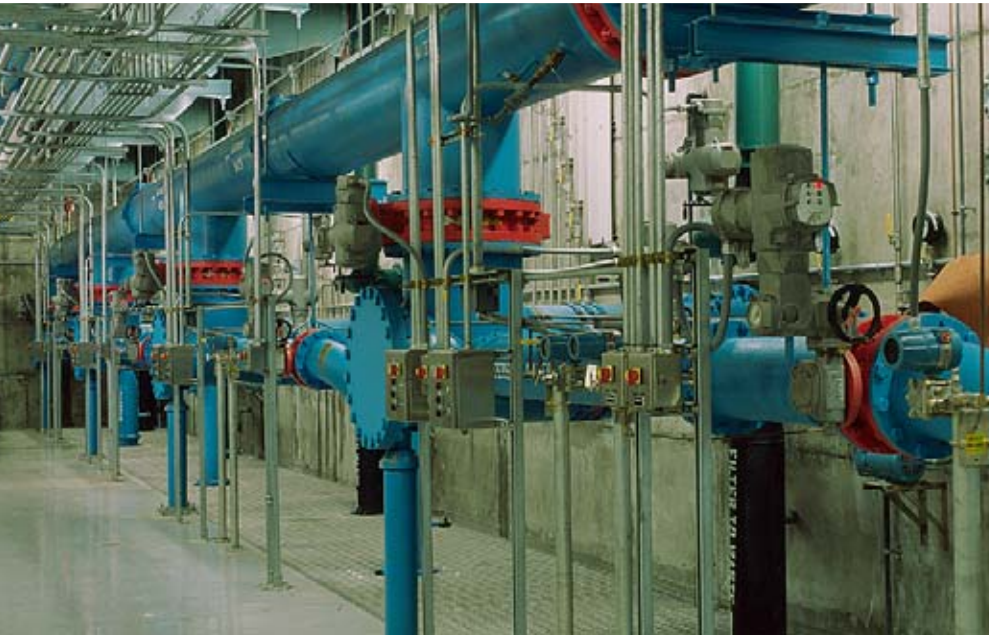
STAINLESS STEEL DISC
RED BODY - BUNA-N SEAT
B5-LGLS - Lever Handle
B5-LGGS - Gear Handle



B5-LGL

B5-LGG

DUCTILE IRON DISC
BLACK BODY - BUNA-N SEAT
B5-LGL - Lever Handle
B5-LGG - Gear Handle



Description

The Matco-Norca B5 Series Butterfly Valve is the newest addition to our family of high quality Iron Valves. Offered in Wafer style and Lug style, these valves are available with Ductile Iron, Aluminum-Bronze or 316 Grade Stainless Steel discs. These valves are in stock with both BUNA-N and EPDM liners. Viton liners are available upon request.

The new B5 design incorporates a one-piece stem with an important new feature. The disc is broached to accept the milled square stem which allows the disc to float, providing substantially improved torque values.

The B5 is available with lever operators and worm gear operators and features a bubble tight shut-off. The lug configuration is suitable for dead-end service. All Matco-Norca Butterfly Valves can be modified with extensions and various actuators.



Features

- ❖ *200WOG for 2" - 12", 150WOG for 14" - 24"*
- ❖ *Teflon Graphite Stem Bushing for positive stem alignment.*
- ❖ *Stem includes a snap ring to prevent inadvertent stem removal.*
- ❖ *Unique Stem to Disc design.*
- ❖ *All valves are epoxy coated.*
- ❖ *Torque Values up to 33% less than other valve designs.*
- ❖ *Precision disc machining provides bubble-tight shutoff.*
- ❖ *Top and bottom alignment holes.*
- ❖ *Ten Position lock lever handles are ideal for on-off and throttling applications.*



Applications

The Matco-Norca B5 Series Butterfly Valves are suitable for many applications. The B5 is well suited for:

- ❖ *Agricultural and Turf Irrigation*
- ❖ *Water Distribution*
- ❖ *Waste Water Treatment*
- ❖ *Industrial Applications Including Chemical, Pulp & Paper and a Wide Array of General Industrial Mediums.*
- ❖ *Valves with BUNA-N Liners are suitable for oil and gas applications.*
- ❖ *Valves with EPDM Liners are suitable for high temperature water and air applications: 250°F.*





Design, Dimensions & Material Specifications

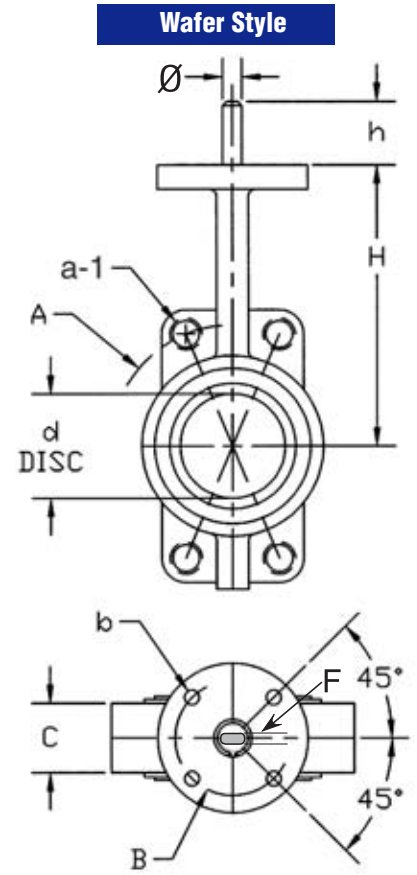
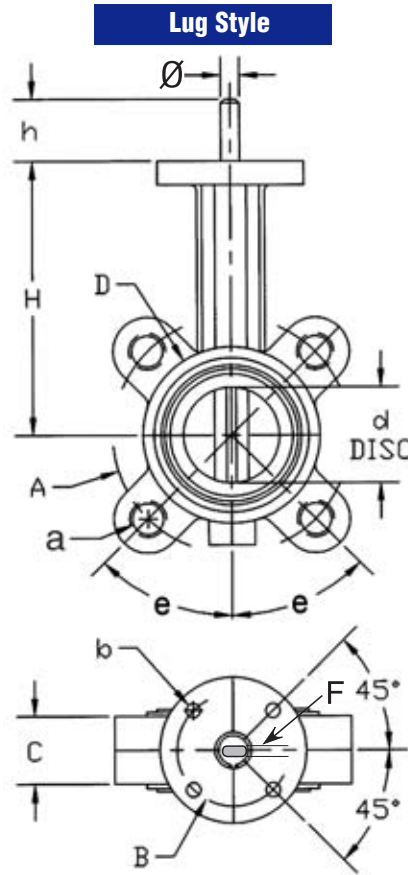
Torque Chart

2" - 12": Inch Pounds
@ 200 PSI Line Pressure

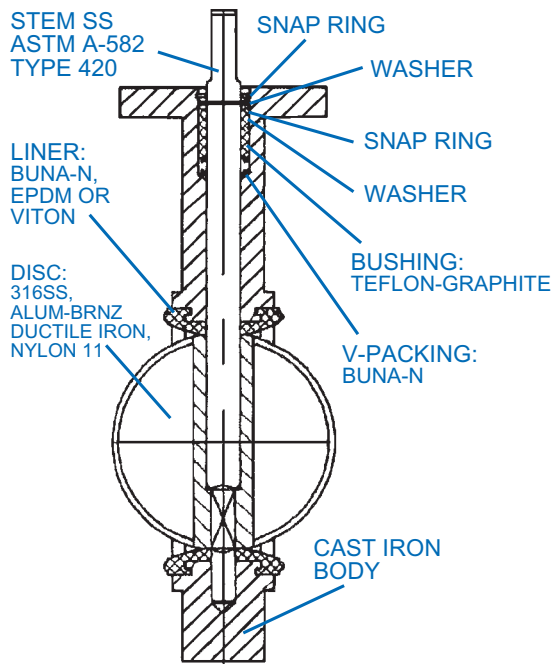
Size	Torque
2"	50
2.5"	50
3"	250
4"	250
5"	500
6"	600
8"	1000
10"	1800
12"	2000

14" - 24": Inch Pounds
@ 150 PSI Line Pressure

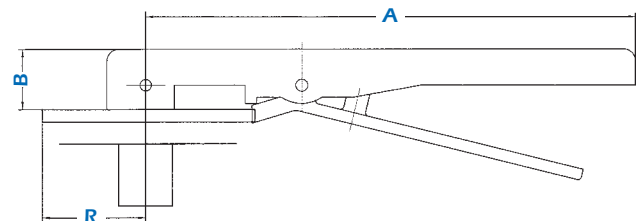
Size	Torque
14"	2500
16"	3000
18"	3000
24"	4250



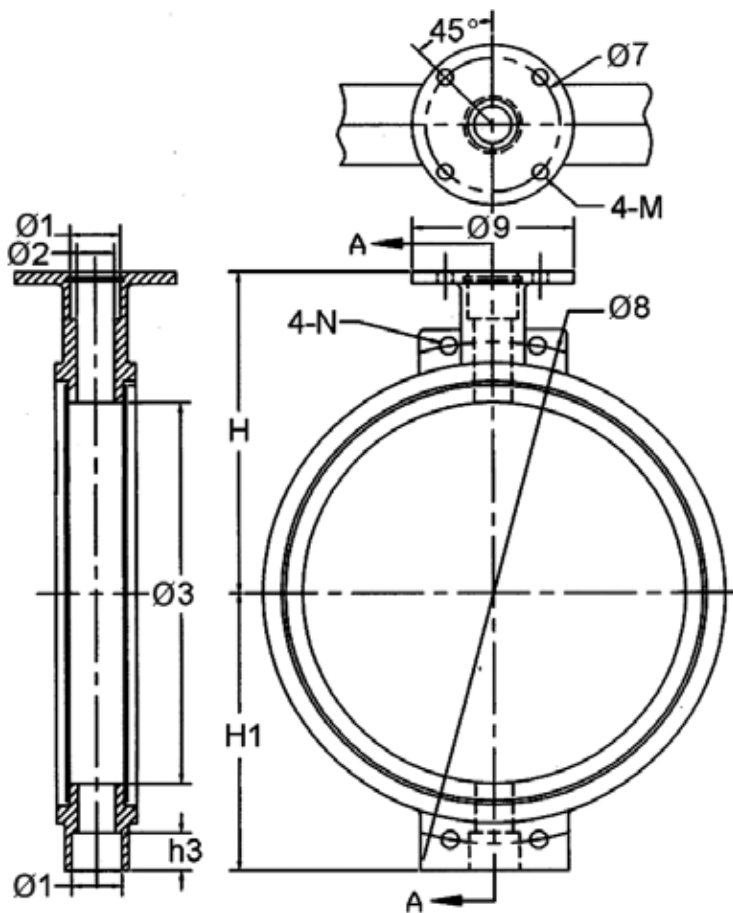
Size	H	d+.05	D	A	a	a-1	B	b	c	h	Stem Ø	F (flat)	e
2"	5.50	2.05	3.54	4.75	5/8"-4	11/16"	2.25	.284	1.625	1.25	.564	.375	45°
2.5"	6.00	2.52	4.02	5.50	5/8"-4	11/16"	2.25	.284	1.750	1.25	.564	.375	45°
3"	6.25	3.09	4.69	6.00	5/8"-4	11/16"	2.25	.284	1.750	1.25	.564	.375	45°
4"	7.00	4.09	5.91	7.50	5/8"-4	11/16"	2.75	.406	2.000	1.25	.627	.438	22.5°
5"	7.50	4.85	6.81	8.50	3/4"-8	13/16"	2.75	.406	2.125	1.25	.752	.500	22.5°
6"	8.02	5.98	7.99	9.50	3/4"-8	13/16"	2.75	.406	2.125	1.25	.752	.500	22.5°
8"	9.50	7.97	10.23	11.75	3/4"-8	13/16"	3.50	.472	2.500	1.25	.880	.625	22.5°
10"	10.75	9.86	12.64	14.25	7/8"-12	15/16"	3.50	.472	2.500	2.00	1.130	.846	15°
12"	12.25	11.87	14.57	17.00	7/8"-12	15/16"	4.25	.472	3.000	2.00	1.130	.846	15°



Overall Dimensions of Handle Operators



Valve Size	A	B	R	Stem Size
2" - 3"	9.58	1.18	2.13	9/16"
4"	9.58	1.18	2.13	5/8"
5" - 6"	10.5	1.18	2.13	3/4"
8"	13.38	1.25	2.13	7/8"
10" - 12"	13.38	1.25	2.13	1-1/8"

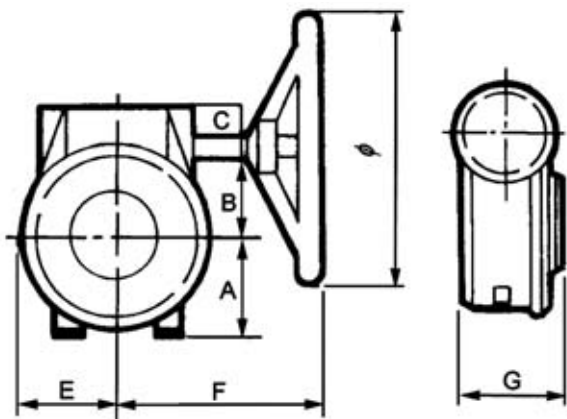


MODELS:	RLO/RWG LGL/LGG	RLOAB/RWG-AB LGLAB/LGG-AB	RLOS/RWGS LGLS/LGGS	RLOSE/RWGSE LGLSE/LGGSE
Body	Cast Iron	Cast Iron	Cast Iron	Cast Iron
Disc	Ductile Iron	Aluminum-Bronze	SS 316	SS 316
Seat	Buna-N *	Buna-N *	Buna-N *	EPDM
Stem	420 Stainless	420 Stainless	420 Stainless	420 Stainless
O-ring	Buna-N	Buna-N	Buna-N	EPDM
Bushing	Teflon-Graphite	Teflon-Graphite	Teflon-Graphite	Teflon-Graphite
Body Color	Black	Black	Red	Gray
Snap ring	Stainless	Stainless	Stainless	Stainless
Lever	Ductile Iron	Ductile Iron	Ductile Iron	Ductile Iron
Gear	Cast Iron	Cast Iron	Cast Iron	Cast Iron

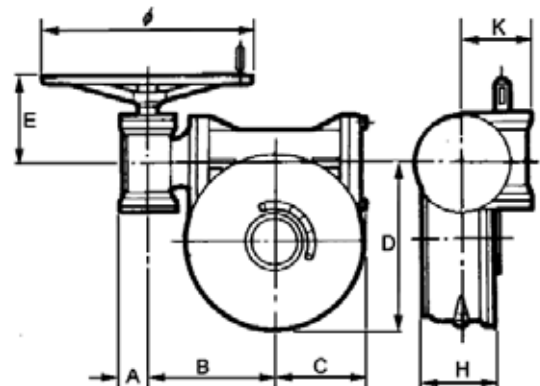
*VITON & Nylon 11 Available on Special Order

Size	Ø1	Ø2	Ø3	Ø7	Ø8	Ø9	h3	H	H1	M	N
14"	1.88	1.37	14.25	5.0	18.75	6	1.45	12.00	10.38	.56	1.06
16"	2.25	1.62	16.38	5.0	21.25	6	1.45	13.00	11.62	.56	1.06
18"	2.62	1.87	18.38	6.5	22.75	8	1.53	14.50	12.75	.81	1.19
20"	2.75	2.12	20.50	6.5	25.00	8	1.24	15.88	14.00	.81	1.19
24"	2.75	2.12	24.96	6.5	29.50	8	1.24	22.25	16.14	.81	1.38

Overall Dimensions of Worm Gear Operators



Overall Dimensions of 2 Stage Worm Gear Operators



Valve Size	A	B	C	E	F	G	Ø
2" - 6"	1.97	1.65	1.22	2.07	5.81	2.95	5.91
8" - 10"	3.15	2.83	1.54	2.95	9.06	3.35	11.81
12" - 14"	3.19	2.83	1.57	3.19	9.02	3.39	11.81
16" - 20"	5.12	4.72	3.54	5.12	11.81	4.86	11.81

Valve Size Inches	Stem Diameter Inches	Free Area ft²	Diameter in Inches	Coefficient of Volume Cv (GPM AT 1P) Disc Opening in Degrees								Nom. Pipe Area ft²	
				10	20	30	40	50	60	70	80	90	
2	.564	.0098	1.34	.119	7.17	13.46	22.44	34.00	49	57	62	62	.022
2.5	.564	.0174	1.79	.815	11.21	28.68	44.68	65.28	87	106	118	123	.034
3	.564	.0310	2.39	.267	16.14	41.30	64.35	94.20	135.3	172	208	239	.049
4	.627	.0512	3.07	.476	28.70	73.42	114.4	167.5	240.6	314	384	438	.087
5	.752	.0814	3.86	.744	44.84	114.7	178.7	261.7	375.9	503	654	817	.136
6	.752	.123	4.75	1.07	64.57	165.2	257.4	376.8	541.3	744	995	1320	.196
8	.880	.265	6.97	1.90	114.8	293.7	457.6	669.9	962.3	1367	1775	3019	.349
10	1.130	.379	8.34	2.98	179.4	458.9	714.9	1047	1504	2124	2924	3978	.545
12	1.130	.643	10.86	4.28	258.3	660.8	1030	1507	2165	3099	4458	6818	.785
14	1.250	.689	11.25	5.54	333.7	853.8	1330	1947	2798	3668	5182	7256	.939
16	1.312	.934	13.37	7.17	432.2	1106	1723	2522	3623	4857	6985	10683	1.23
18	1.500	1.260	15.20	9.13	550.6	1409	2195	3213	4616	6216	9063	13867	1.55
20	1.625	1.569	16.96	11.32	682.0	1745	2719	3980	5718	7740	11284	17193	1.93
24	2.000	2.418	21.06	16.26	980.1	2508	3907	5720	8217	11454	16803	26449	2.92



B5 EXTENSION KITS

FOR USE IN UNDERGROUND INSTALLATIONS

B5 Extensions feature one piece inner stem construction, solid outside housing with full face flanges with BUNA gaskets for water tight seal. The extensions accommodate 10 position levers or gear operators. The extension kits include all necessary hardware for proper mounting to the valve.

AVAILABLE LENGTHS

B5 extensions are available in the following lengths: 24", 36", 48", 60", 72".

EXTENSION - VALVE DIAMETER DESIGNATION

Each letter below corresponds to the valve size for which you are ordering an extension.

A	B	C	D	E	F	G	H	I
2"-3"	4"	5"-6"	8"	10"	12"	14"	16"	18"

EXAMPLE:

To order a 48" Extension for an 8" Butterfly valve, the correct product number would be:

Valve Part # — **B5-X48-D** — Nominal Valve Size
Designates Extension — Extension Length

B5-RLO-X-48D

CORPORATE HEADQUARTERS

P.O. Box 27 Route 22
Brewster, NY 10509

LOCAL:

Tel: 845-278-7570
Fax: 845-278-9056

TOLL FREE:

Tel: 800-431-2082
Fax: 800-640-2252

E-MAIL: mail@matco-norca.com

CENTRAL REGION

1150 Silber Road
Houston, TX 77055

LOCAL:

Tel: 713-680-2888
Fax: 713-680-2999

TOLL FREE:

Tel: 800-935-5456
Fax: 800-683-4247

www.matco-norca.com

WESTERN REGION

5593 Fresca Drive
La Palma, CA 90623

LOCAL:

Tel: 714-522-1889
Fax: 714-522-3828

TOLL FREE:

Tel: 866-532-8306
Fax: 866-532-8307